

MNP-BSPP MINIPRESE PROVA PRESSIONE TEST COUPLINGS FOR PRESSURE CHECKING



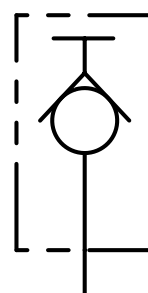
CODICE ORDINAZIONE ORDERING CODE	01	02
	MNP	

01	MINIPRESE PROVA PRESSIONE (TEST COUPLINGS FOR PRESSURE CHECKING)	MNP
02	DIMENSIONE (SIZE)	BSPP 1/8
		BSPP 1/4
		BSPP 3/8
		BSPP 1/2

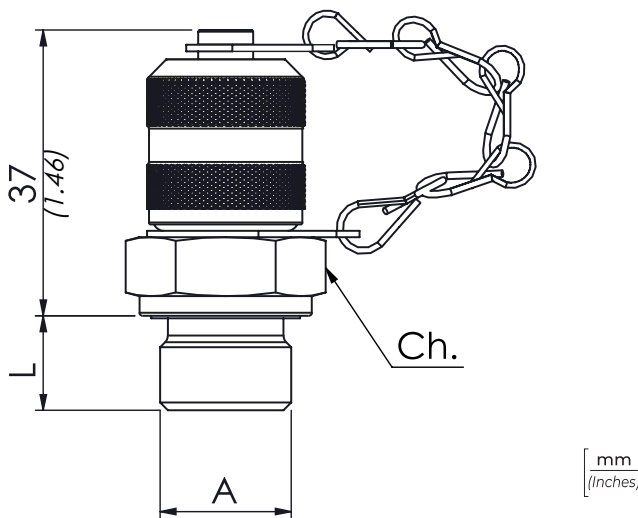
DATI TECNICI / TECHNICAL DATA

Olio idraulico - Mineral oil	ISO 6743/4 (DIN 51524)
Viscosità olio - Oil viscosity	15-250 mm²/s (15 to 250 cSt)
Classe di contaminazione max Max contamination index	ISO 4406:1999 Classe 19/17/14
Temperatura dell'olio - Oil temperature	-20°C +80°C -4°F + 176°F
Temperatura ambiente - Environment temperature	-20°C +50°C -4°F + 122°F
È indispensabile l'utilizzo di un filtro per proteggere la valvola (filtrazione consigliata 15 µm) It is necessary a filter use to protect the valve (advised filtration 15 µm)	

SCHEMA IDRAULICO / HYDRAULIC CIRCUIT



**MINIPRESE
TEST COUPLINGS
M16X2**



CARATTERISTICHE TECNICHE / TECHNICAL CHARACTERISTICS

TIPO TYPE	A	PRESSIONE MAX MAX PRESSURE bar-PSI	Ch. mm	L	COPPIA DI SERRAGGIO TIGHTENING TORQUE Nm-lbt ft	PESO APPROX (kg) APPROX WEIGHT (lbt)
MNP180	BSPP 1/8	630 (9135)	17	8 (0.31)	20 (14.6)	0,07 (0.16)
MNP140	BSPP 1/4		19	12 (0.47)	30 (22)	0,08 (0.18)
MNP380	BSPP 3/8		22	12 (0.47)	60 (44)	0,10 (0.22)
MNP120	BSPP 1/2		27	14 (0.55)	80 (58.6)	0,13 (0.29)

MNP-NPTF

MINIPRESE PROVA PRESSIONE
TEST COUPLINGS FOR PRESSURE CHECKING



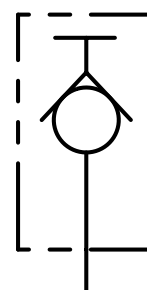
CODICE ORDINAZIONE ORDERING CODE	01 MNP	02
--	------------------	----

01	MINIPRESE PROVA PRESSIONE (TEST COUPLINGS FOR PRESSURE CHECKING)	MNP
02	DIMENSIONE (SIZE)	NPTF 1/8 180N
		NPTF 1/4 140N
		NPTF 3/8 380N
		NPTF 1/2 120N

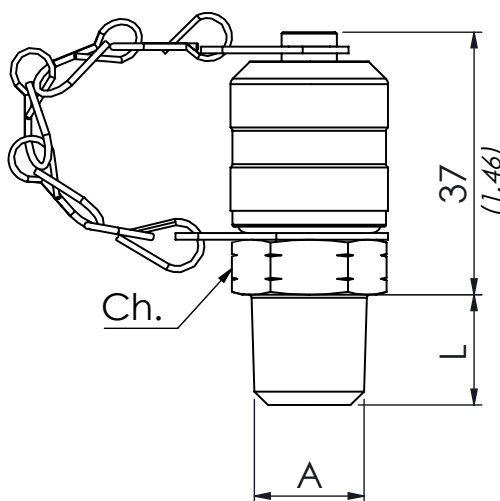
DATI TECNICI / TECHNICAL DATA

Olio idraulico - Mineral oil	ISO 6743/4 (DIN 51524)
Viscosità olio - Oil viscosity	15-250 mm²/s (15 to 250 cSt)
Classe di contaminazione max Max contamination index	ISO 4406:1999 Classe 19/17/14
Temperatura dell'olio - Oil temperature	-20°C +80°C -4°F +176°F
Temperatura ambiente - Environment temperature	-20°C +50°C -4°F +122°F
È indispensabile l'utilizzo di un filtro per proteggere la valvola (filtrazione consigliata 15 µm) It is necessary a filter use to protect the valve (advised filtration 15 µm)	

SCHEMA IDRAULICO / HYDRAULIC CIRCUIT



MINIPRESE
TEST COUPLINGS
M16X2



[mm]
[inches]

CARATTERISTICHE TECNICHE / TECHNICAL CHARACTERISTICS

CODICE CODE	A	PRESSIONE MAX (bar) MAX PRESSURE (PSI)	Ch. mm	L	COPPIA DI SERRAGGIO TIGHTENING TORQUE Nm-lbt ft	PESO APPROX (kg) APPROX WEIGHT (lbt)
MNP180N	NPTF 1/8	630 (9135)	17	10 (0.39)	20 (14.6)	0,07 (0.16)
MNP140N	NPTF 1/4		19	12 (0.47)	30 (22)	0,08 (0.18)
MNP380N	NPTF 3/8		22	14 (0.55)	60 (44)	0,10 (0.22)
MNP120N	NPTF 1/2		27		80 (58.6)	0,13 (0.29)

I dati presenti nel catalogo possono essere soggetti a variazioni, pertanto OLEOWEB si riserva il diritto di apporre modifiche in qualunque momento e senza alcun preavviso. OLEOWEB reserves the right to modify the products at any time and without notice: the technical data of the catalogue can consequently change.

Aggiornamento - Update
21R-2021



notes

Area for notes with horizontal dotted lines.



notes

A series of horizontal dotted lines for taking notes.